

FRIENDS of Banks Peninsula Inc.

Akaroa's Community Environment Society since 1990

21/04/2026

Christchurch City Council
Finance and Performance Committee

Presentation by

FRIENDS of Banks Peninsula

Endorsed by Akaroa Civic Trust, Akaroa Ratepayers & Residents Association, Robinsons Bay Ratepayers & Residents Association

regarding

Akaroa Wastewater Cost Reduction Opportunities

22 April 2026

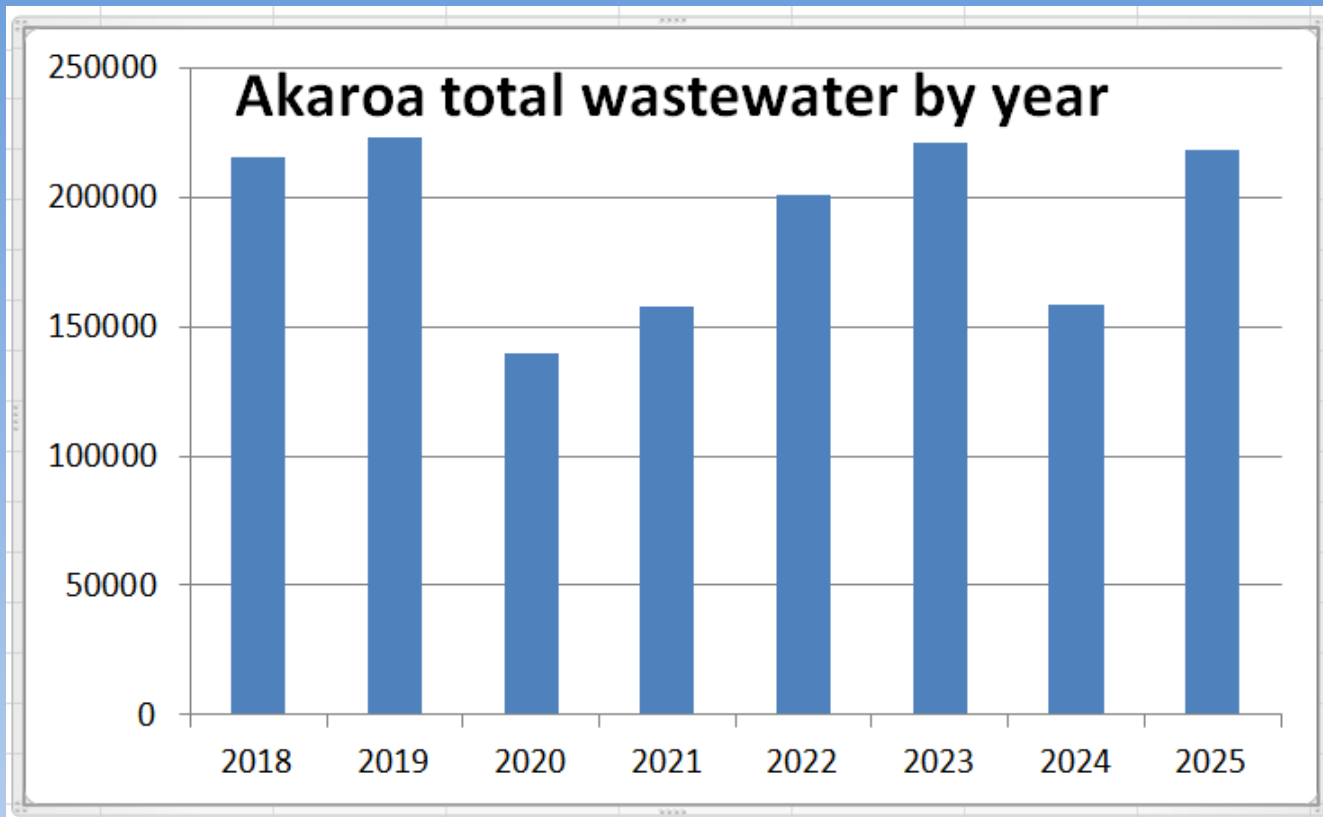
Suky Thompson

Brent Martin

FOBP long involvement

- Technical expertise – we have read and analysed all technical documents since 2016
- Our work has picked up multiple critical errors leading to discovery of
 - faulty flow meter
 - true wastewater flow volumes
 - I&I levels and
 - overflows
- Validated by CCC experts and Hearing expert conferencing

I&I is not under control



- Total Akaroa annual wastewater volume is as high as before any I&I repairs done
- Rain derived I&I is still the main determinant of total wastewater volume

Our view of cost cutting proposals

- **Harbour outfall**
 - Tried and trusted technology
 - Discharge into deep water with rapid dispersal in main current
 - Resilient to climate change because not affected by I&I
 - Simple to operate
 - Consentable under WEPS
- **Moving the treatment plant**
 - Highly visible from residential areas of Akaroa and roads
 - Overturns the existing 2015 consent
- **New Land Based options**
 - Reduced land area and addition of Duvauchelle means greatly increased wastewater load on Robinsons Bay sites
 - 10 years of engineering analysis being overruled - each time CCC has reduced land area it has increased irrigation rates above that which was previously deemed to be a safe level. Now double the 2023 safe levels.
 - No evidence new options supported with technical research. PDP report referenced in agenda does not include
 - Irrigating Duvauchelle wastewater to Robinsons Bay
 - Modelling of overflow days with reduced storage
 - 7.8ha of land removed from Robinsons Bay field because too steep for WEPS, but 6ha of land already considered high risk (due to elevation, downslopes and winter saturation) retained

All existing risks exacerbated

- Irrigation to natives on sloping ground not tried anywhere else
- Irrigation is to occur year round to the point where soils are saturated
- Peninsula loess soils suffer from slips in prolonged wet conditions
- Runoff of nitrogen pollution into stream and shallow bays is a major risk when irrigating to saturation
- Risks increase with climate change storms
- The irrigation system is complex to manage with pumping stations, storage tanks and maintenance of 100s of kms of irrigation pipe and millions of drippers in a dense native forest

Analysis of saving for land options

Data extracted from Slide 17 April 15 staff presentation

	Total cost	Total saving	Moving plant	Reducing tanks and land	% of days irrigated to land (CCC data)
Current proposal	\$176m				98.6
Option 1 16,000m ³ storage	\$150m	\$26m	\$10m	\$16m	99.3
Option 2 4,000m ³ storage	\$136m	\$40m	\$10m	\$30m	97.2

- More expensive Option 1 recommended by staff instead of much cheaper Option 2 based on small difference in overflow days only
- No technical information has been provided to back up these overflow days figures

Overflow assumptions do not match reality

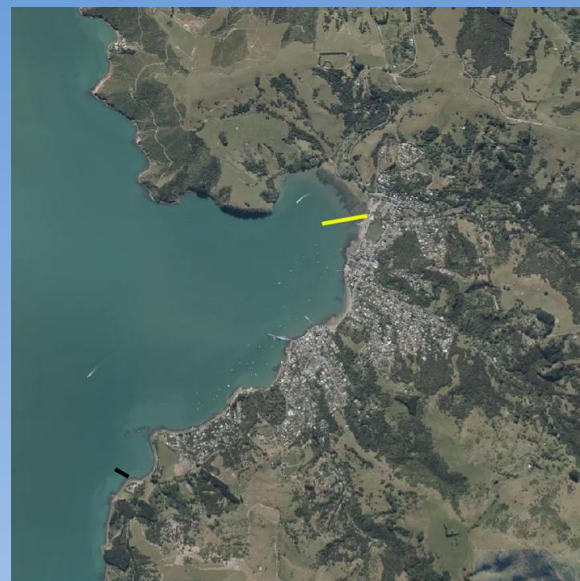
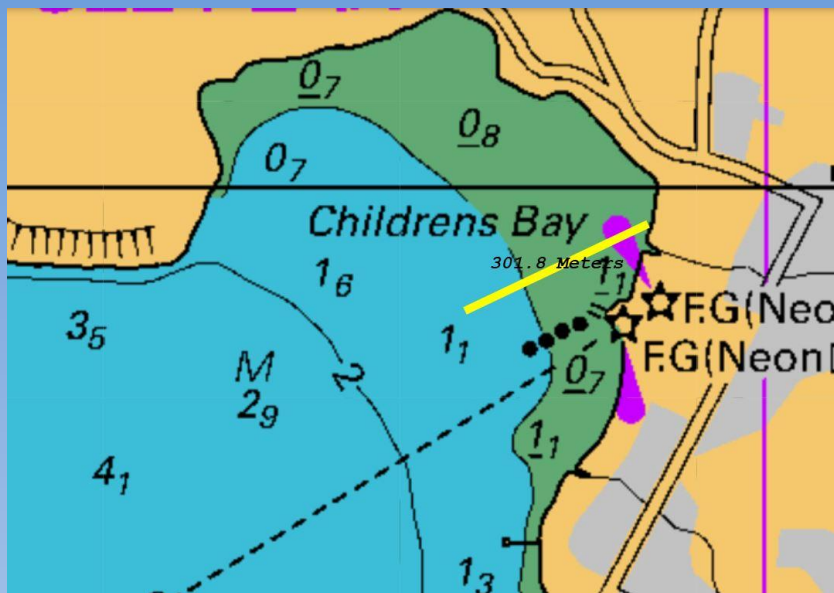
- Discharge to land relies on soil and plants up-taking water, not running off. Ceasing irrigation when ground is saturated is critical.
- CCC stated in consent application that irrigation would not take place once ground was saturated
- Modelling of overflows to date does **not** take ground saturation into account, it only assumes irrigation ceases on a day when 50mm of rain has fallen.



Irrigation site in Robinsons Bay showing saturation 8 days after last rainfall and 11 days after the main storm

- Ceasing irrigation when the ground is saturated will result in many more days of overflows than simplistic modelling indicates
- Increased irrigation loading means more frequent saturation
- The overflow discharge also provides a critical backup for field failure

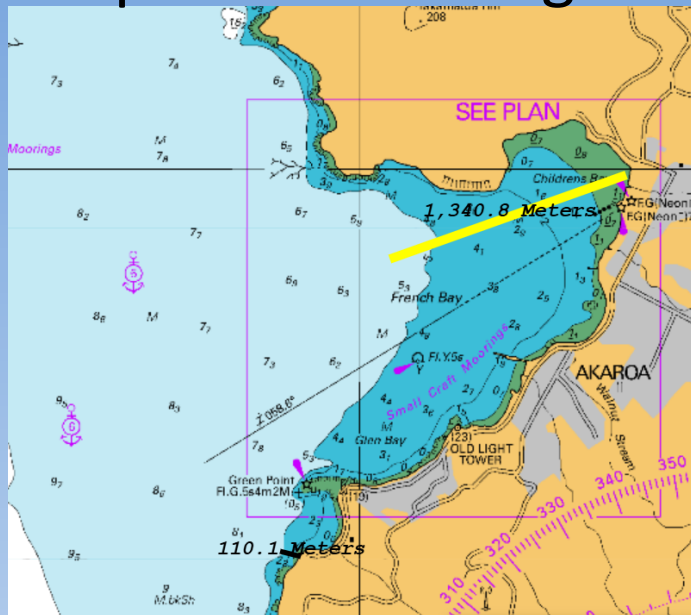
Proposed short overflow repugnant to community



- Discharge to water bodies relies on dilution
- Proposed 300m Childrens Bay overflow is at head of a shallow, poorly flushing bay into water only 1m deep
 - By contrast current 100m outfall is to water that is 6m deep and in the main flushing current
- Contaminants will accumulate in mudflats – nitrogen, heavy metals, pharmaceutical, microplastics and forever chemicals
- In the heart of Akaroa marine recreational area

Extending overflow to deep water essential

- Before considering any land based option there needs to be an acceptable discharge for overflows, and as a backup in case of irrigation field failures



Example of Childrens Bay overflow extended by 1km to deeper water (5m depth) and outside of shallow bay where it can flush

- Cost of extending Childrens Bay overflow by 1km to deep water would be maximum \$5.9m
 - Based on applying Harbour Outfall per meter costs

Conclusion

- Moving the treatment plant is controversial and requires re-consenting
- Land based options present unacceptable environmental risk
 - Overflows need to be dealt with by an acceptable outfall
 - Proper technical reports must be provided for Council and public scrutiny to support any changes proposed
- At this stage the only safe and feasible solution presented is Mid-Harbour outfall
 - Simpler and cheaper to operate
 - Resilient to climate change and unaffected by I&I
 - Cultural concerns are well understood, but geography and soils, climate change, I&I and high cost mean that land disposal is increasingly impracticable and very high risk.

Our recommendations

- Less haste, enable peer review and community input
- Don't cherry pick LGA
 - Mana whenua cultural requirements are to be balanced with other matters
 - Community views must be taken into consideration under Section 78, including persons likely to be affected and those with an interest in the matter
- Water Services Act requires you to
 - Provide water services that are resilient to climate change
 - Act in the best interests of current and future consumers – debt for the future
- Your own strategic priorities include
 - Build trust and confidence in Council through meaningful partnerships and listening to residents
 - Work with Ngāi Tahu to achieve meaningful outcomes that benefit the **whole** community
- We do not support any options being put to Council and request
 - Full public disclosure of all technical information prepared for the new options
 - Meeting between FOBP and WW staff to answer questions
 - Public meeting where the Council communicates the substantial changes proposed to the full community
 - Receive community feedback before making decisions on our behalf